

# KAAST Turret lathe HRL 42 • 60

- All feeds and travels are manually-driven by handwheels
- Feed length is adjusted by means of exchangeable micrometer stops
- Infinitely variable adjustment and electronic control of spindle speed
- 2 speeds (L/H) of main spindle can quickly changed by moving drive belt
- Spindle speed is shown by digital display with two speed ranges
- Semi-automatic turret switching and handwheel-based control system
- Pneumatic-driven clamping/release of work piece in the collet chuck
- Mechanical bar-stock feeder (feeding by counterweight)

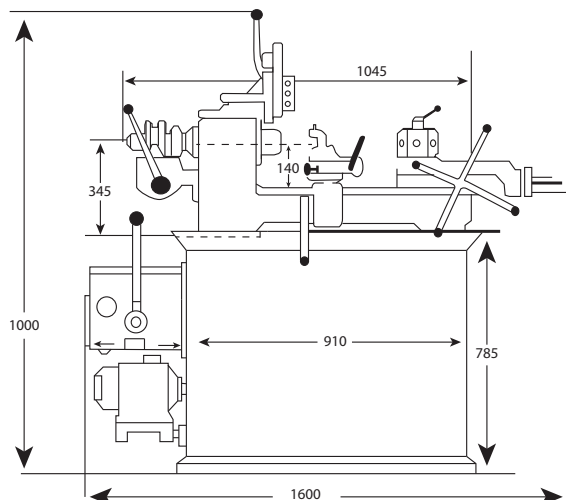


## Standard configuration

- ✓ Cutoff carriage
- ✓ 4-post toolholder
- ✓ 1-post back toolholder
- ✓ 6-position turret
- ✓ Coolant system
- ✓ Bar feeder
- ✓ Collet chuck
- ✓ Operation manual

## Optional configuration

Collet chuck	Ø30 mm	Ø42 mm	Ø60 mm
DIN 6343	Typ 163 E	Typ 173 E	Typ 185 E
Collet (Ø with 1 mm increment)	Ø3–30 mm (0.11–1.17")	Ø3–42 mm (0.11–1.6")	Ø4–60 mm (0.15–2.3")
Collet (hex with 1 mm increment)	on request	6–36 mm (0.23–1.4")	8–50 mm (0.31–1.95")
Collet (rectangular 1 mm)	on request	6x6–28x28 mm (.24x.24"–1.1x1.1")	7x7–40x40 mm (.28x.28"–1.6x1.6")



Specifications		HRL 42		HRL 60
		1.6" round		2.3" round
Max. workpiece cross-section	Round	mm	Ø42 (1.6")	Ø60 (2.3")
	Hexagonal	mm	36 (1.4")	52 (2")
	Rectangular	mm	29 (1.1")	42 (1.7")
Collet chuck		mm	Ø30/Ø42 (1.1/1.6")	Ø60 (2.3")
Turret			6-Pos.	
Turret tool slot-Ø		mm	Ø25 (1")	
Feed travels	Longitudinal slide	mm	75 (3")	
	Transverse slide	mm	155 (6.1")	
	Turret carriage	mm	142 (5.6")	
	Cutoff carriage	mm	35 (1.4")	
Main drive motor	kW	4 (5.5 Hp)		
Spindle speeds	rpm	150–1500		
Pneumatic system pressure	bar	5–8 (70–115 psi)		
Air flow rate	l	0.15 per clamping (0.04 gal)		
Coolant supply pump	kW	0.1 (0.15 Hp)		
Lubrication motor	kW	0.1 (0.15 Hp)		
Dimensions (L/W/H)	mm	900 (1,980 lbs)		
Weight	kg	1600x800x1600 (62x31x62")		
Item No.			<b>1700001</b>	<b>1700002</b>

\*The above specifications are subject to change without prior notice. No liability for printing mistakes. Machine may be shown with optional equipment.