



**CNC lathe**  
**A-Turn 300**  
 24" x 27~118"

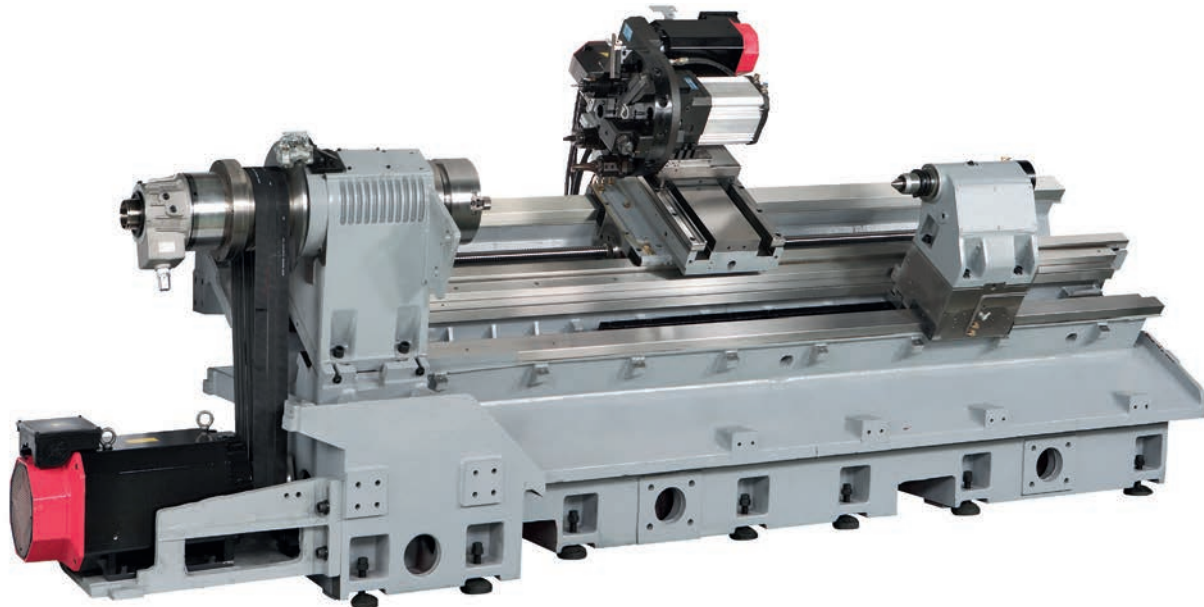


**Standard configuration**

- ✓ Hollow 3-jaw hydraulic chuck
- ✓ Hydraulic turret and tool holders
- ✓ FANUC Oi-T control
- ✓ 8.4" color LCD monitor
- ✓ Registered part program numbers: 400 sets
- ✓ Part program size: 640 m
- ✓ RS-232 interface
- ✓ Heat exchanger for electric cabinet
- ✓ Coolant system
- ✓ Full-enclosed X/Z axis way cover
- ✓ Automatic lubrication system
- ✓ Three-color warning light
- ✓ Standard soft jaw and hard jaw
- ✓ Tool kit
- ✓ Operation manual
- ✓ Chip conveyor
- ✓ Chip cart
- ✓ Programmable tailstock

**Optional configuration**

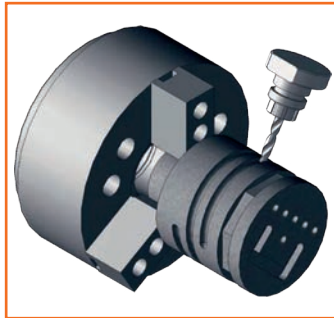
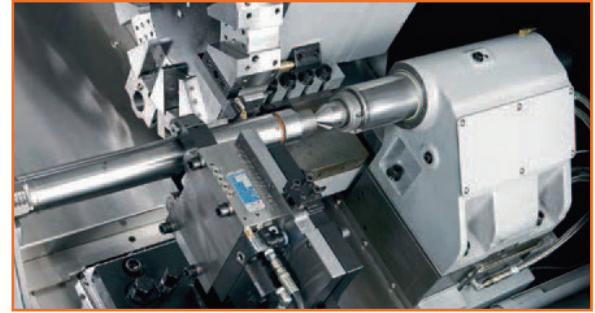
- Servo turret
- Collet chuck
- Tool setter
- External control box
- Parts catcher
- Parts conveyor
- Bar feeder
- Bar feeder interface
- 7 or 24 pins
- Auto door
- Oil mist collector
- Oil-coolant skimmer
- Air cooler for electric cabinet
- High pressure coolant system
- Transformer
- Steady rest



\*The above specifications are subject to change without prior notice. No liability for printing mistakes. Machine may be shown with optional equipment.

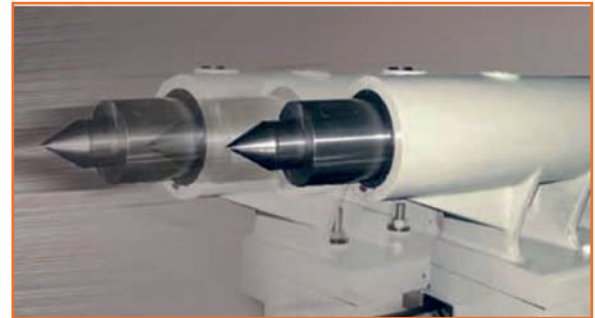


- One piece Meehanite slant bed lathe has low center of gravity and superior rigidity.
- Flex-resistant and shock-absorbing headstock is heat-treated and annealed twice. Reaching HRC53 hardness, it can take heavy cuts while maintaining accuracy.
- Available with Live-Tools and C-Axis.



### Driven attachment with C-axis

The C-axis has an extremely high resolution and thus enables production of extremely precise true to size work pieces. The tool turret from Sauter is standard with VDI tool holders. The high torque of the rotary tool allows powerful metal cutting in the A-turn lathes.



Specifications	A-Turn 300/700 24" x 27"	A-Turn 300/1200 24" x 47"	A-Turn 300/1640 24" x 64"	A-Turn 300/2200 24" x 86"	A-Turn 300/3000 24" x 118"	
Controller	FANUC 0i-T					
<b>CAPACITY</b>						
Swing over bed	mm	612 (24.1")				
Swing over carriage	mm	388 (15.3")				
Max. cutting diameter	mm	500 (19.7")	500 (19.7")	500 (19.7")		
Max. cutting length	mm	700 (27.6")	1200 (47.2")	1640 (64.5")	2200 (86.6")	3000 (118")
<b>SPINDLE</b>						
Spindle nose taper	ASA	A2-8 (A2-11)				
Chuck diameter	inch	10 (12/15)				
Spindle speed	rpm	3500 (2700/2500)				
Spindle motor power	kW	18.5 [opt. 22] (25 Hp [opt.30 Hp])				
Bar capacity	mm	75 to 105 (3" to 4.1")				
<b>TRAVELS</b>						
Z axis	mm	750 (29.5")	1250 (49.2")	1750 (68.9")	2250 (88.6")	3100 (122")
X axis	mm	250+50 (9.8+2")				
<b>FEED RATES</b>						
Rapid traverse – Z axis	m/min	24 (945"/min)				
Rapid traverse – X axis	m/min	20 (780"/min)				
<b>TURRET</b>						
Number of tools	#	12				
Square tool shank size	mm	25 (1")				
Round tool shank size	mm	40 (1.6")				
C-axis index**	deg	[opt. 0.01]				
Max. rotary tool speed**	rpm	[opt. 4000]				
Rotary tool power**	kW	[opt. 3.7, 4.5 (5, 6 Hp)]				
<b>TAILSTOCK</b>						
Tailstock body travel	mm	540 (21.2")	1040 (41")	1600 (63")	2040 (80")	3040 (120")
Tailstock quill travel	mm	120 (4.7")				
Tailstock quill diameter	mm	85 (3.3")				
Quill taper	MT#	5				
<b>DIMENSIONS</b>						
Dimensions (L/W/H)	m	3x1.8X1.8 (118x71X71")		4.5x1.8x1.8 (177x71x71")	5x1.8x1.8 (197x71x71")	6.5x1.8x1.8 (256x71x71")
Weight	kg	5500 (12,130 lbs)		7500 (16,500 lbs)	9000 (19,800 lbs)	12000 (26,400 lbs)
Item No.		<b>1610151</b>	<b>1610153</b>	<b>1610155</b>	<b>1610156</b>	<b>1610157</b>

\*The above specifications are subject to change without prior notice. No liability for printing mistakes. Machine may be shown with optional equipment.

\*\*Live tool optional (may reduce some travels)