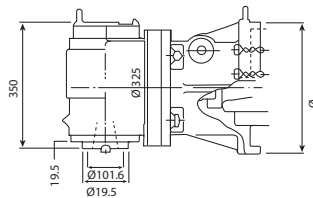
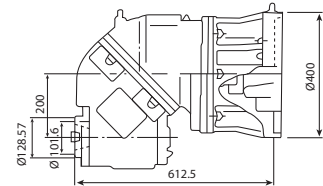
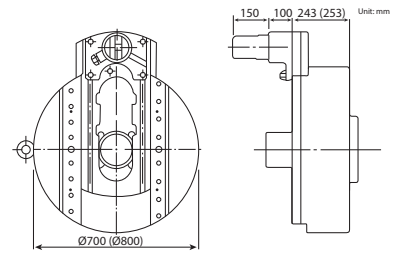
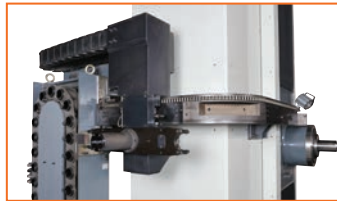




CNC horizontal boring mill

HBW 110R CNC • 135TR CNC



Specifications			HBW 110R CNC	HBW 110R2 CNC	HBW 110R3 CNC
			4" spindle, 4' X	4" spindle, 6' X	4" spindle, 9' X
TRAVELS	X-axis (table travel)	mm	1500 (59")	2000 (78")	3000 (118")
	Y-axis (spindle vertical travel)	mm	1500 (59")	1800 (70")	2000 (78")
	Z-axis (head vertical travel)	mm	1100 (43")	1300 (51")	1500 (59")
	W-axis (quill travel)	mm		600 (23.6")	
Table dimensions (W/L)	mm	1400x1250 (55x49.2")	1600x1400 (63x55")	1800x1600 (70.8x63")	
T-slots	mm		22x7	22x9	
Max. table load	kg	6000 (13,200 lbs)	8500 (18,700 lbs)	10000 (22,000 lbs)	
Rotary table resolution	deg		0.001°/360°		
Max. rotation diameter (workpiece)	mm	1877 (73.9")	2126 (83.7")	2408 (94.8")	
Table rotation speed	rpm		1		
FEEDS	Rapid traverse – X/Y/Z	mm/min		10000 (393"/min)	
	Cutting feed rate: X/Y/Z	mm/min		1–5000 (0.04–197"/min)	
SPINDLE	Spindle taper			BT/ISO 50	
	Speeds	rpm		5–2500	
	Spindle diameter	mm		Ø110 (4.3")	
	Torque	Nm		1245 (910 ftlbs)	
	Max. torque	Nm		19600 (14,440 ftlbs)	
	Main spindle motor	kW		18/22 (25/30 Hp)	
	Power of X/Y/Z servomotor	kW		7 (9 Hp)	
Dimensions (L/W/H)	mm	4650x6200x3800 (183x244x150")	5230x6280x4100 (206x248x162")	6230x6510x4300 (246x257x170")	
Weight	kg	22800 (50,160 lbs)	24000 (52,800 lbs)	26000 (57,200 lbs)	
Item No.		2630001	2630002	2630003	

*The above specifications are subject to change without prior notice. No liability for printing mistakes. Machine may be shown with optional equipment.



Standard configuration

- ✓ Fanuc Oi-MD CNC control
- ✓ Spindle oil cooling
- ✓ Digital encoder in table rotation axis
- ✓ Hydraulic table clamping
- ✓ Quality SKF spindle bearings
- ✓ Heat exchanger for electric cabinet
- ✓ Work light
- ✓ Telescopic cover in the X/Y/Z axes
- ✓ Electrical handwheel (MPG)
- ✓ RS-232 Port
- ✓ Automatic lubrication
- ✓ Leveling pads
- ✓ Operation manual



Optional configuration

- Faceplate Ø700 mm (27.5")
- Faceplate with automatic sled (for drill/bore jobs)
- 24, 32, 40 or 60-tool magazine with automatic tool changer BT50
- Coolant through spindle, 20 bar (290 psi)
- Screw chip conveyor
- Chip conveyor chain
- Glass linear scales for X/Y/Z axes
- Additional vertical milling head BT50 (HBW 135 CNC)
- Additional universal milling head BT50 (HBW 135 CNC)
- Siemens, Fagor or Heidenhain CNC control
- Complete enclosure
- Tool measurement, Renishaw TS-27R
- Work piece measurement, Renishaw OMP-60

- Horizontal boring mill with large travels and high intrinsic weight for the machining of heavy and large workpieces
- The spindle cooling ensures a constant temperature for long-lasting accurate results
- Both the hardened HRC62-68 spindle and the housing are made of high quality steel alloys which combined with the two-stage automatic gearbox allows high cutting rates
- The hardened HRC 43-47, rectangular guides, on

a huge rigid machine bed, are coated with Turcite B and precision ground, so smooth operation is achieved even for small movements at low speed

- The TR and TR2 also have two external guides which allow high workpiece weight and ensure the accuracy of the Z axis
- Pendant control panel - for best user performance
- The HBW 135 CNC machines can be equipped with a vertical or universal milling head

Specifications			HBW 135TR CNC	HBW 135TR2 CNC	HBW 135TR3 CNC	HBW 135TR4 CNC
			5" spindle, 4' X	5" spindle, 6' X	5" spindle, 9' X	5" spindle, 13' X
TRAVELS	X-axis (table travel)	mm	1500 (59")	2000 (78")	3000 (118")	4000 (157")
	Y-axis (spindle vertical travel)	mm	1500 (59")	1800 (70.8")	2300 (90.5")	2800 (110")
	Z-axis (head vertical travel)	mm	800 (31.5")	1100 (43")	1400 (55")	1700 (66.9")
	W1-axis (spindle travel)	mm	700 (27.95")			
	W2-axis (quill travel)	mm	350 (13.78")			
	W-axis (W1+W2)	mm	1050 (41.3")			
Table dimensions (W/L)		mm	1250x1400 (49x55")	1400x1600 (55x63")	1600x1800 (63x70")	1800x2000 (70x78")
T-slots		mm	22x7		22x9	
Max. table load		kg	6500 (14,300 lbs)	8500 (18,700 lbs)	10000 (22,000 lbs)	12000 (26,400 lbs)
Rotary table resolution		deg	0.001°/360°			
Max. rotation diameter (workpiece)		mm	1877 (73.9")	2126 (83.7")	2408 (94.8")	2565 (101")
Table rotation speed		rpm	1			
FEEDS	Rapid traverse – X/Y/Z	mm/min	8000 (315"/min)			
	Rapid traverse – W	mm/min	3000 (118"/min)			
	Cutting feed rate: X/Y/Z	mm/min	1–5000 (0.04–197"/min)			
	Cutting feed rate: W	mm/min	1–3000 (0.04–118"/min)			
SPINDLE	Spindle taper		BT 50/ISO 50			
	Speeds	rpm	5–2500			
	Spindle diameter	mm	Ø135 (5.3")			
	Torque	Nm	3227 (2,380 ftlbs)			
	Main spindle motor	kW	37/45 (50/60 Hp)			
Dimensions (L/W/H)		mm	5230x6640x3750 (206x262x148")	5730x6950x4120 (226x274x163")	6730x7250x4620 (265x286x182")	7780x7550x5320 (307x298x210")
Weight		kg	33400 (73,500 lbs)	36300 (79,800 lbs)	40000 (88,000 lbs)	43700 (96,100 lbs)
Item No.			2630004	2630005	2630006	2630007

*The above specifications are subject to change without prior notice. No liability for printing mistakes. Machine may be shown with optional equipment.